

CARLUKE
CAMERA CLUB
NEWSLETTER
ISSUE NO 4
DECEMBER 2011



Photo by Billy Chapman – one of our Advanced members.

From his members' gallery on the club website.

: <http://www.carluke-cc.org.uk/>

LET'S SHARE

HISTORIC SCOTLAND ALBA AOSMHOR

EXPLORER PASS from £15
(Special Winter Price)

<http://www.historic-scotland.gov.uk/index/places/explorer.htm>

British Photographic Exhibitions and Awards

<http://www.b-p-e.org.uk/>

Southport Photographic Society

CLOSING DATE : 18TH January 2012

<http://www.southport-ps.co.uk/Exhibition/OpenForEntry.aspx>



PHOTOGRAPHY MAGAZINES – REDUCED SUBSCRIPTIONS

<http://www.photoanswers.co.uk/Photography-Magazines/Digital-Photo-Magazine/>

<http://www.photoanswers.co.uk/Photography-Magazines/Practical-Photography-Magazine/>

GLASGOW ON ICE – GEORGE SQUARE

Sat 26th November until Tues 3rd Jan 2012

<http://www.glasgowloveschristmas.com/glasgow-on-ice/Pages/default.aspx>

GEORGE SQUARE CALENDAR OF EVENTS

<http://www.glasgowloveschristmas.com/Documents/Calendar%20Web%20Version.pdf>

MERRY CHRISTMAS

THE CLUB CLOSSES WITH A CHEESE & WINE + QUIZ NIGHT FRIDAY 16TH DECEMBER AND RE-OPENS FRIDAY 6TH JANUARY 2012 WITH THE ANNUAL “WHERE IS IT “ PHOTO QUIZ.

Links

Club Website: club calendar, club syllabus and lots more: <http://www.carluke-cc.org.uk/>

<http://patronages.fiap.net/M2012.htm>

1st PORT TALBOT INTERNATIONAL SALON OF PHOTOGRAPHY (DIGITAL)

CLOSING DATE: 31ST DECEMBER 2011

www.porttalbotcameraclub.org/salon-home.html

99th SOUTHAMPTON INTERNATIONAL EXHIBITION OF PHOTOGRAPHY

CLOSING DATE 4TH FEBRUARY 2012

<http://www.southamptoninternational exhibition.co.uk>

WEST CUMBRIA GROUP GREAT BRITISH SMALL PRINT CIRCUIT 2012

CLOSING DATE 5TH FEBRUARY 2012

http://www.westcumbriaphotogroup.co.uk/gbspc2012/calendar_2012.php

PRINT COMPETITION WITH PRIZES

CLOSING DATE 31ST Dec 2011

HARMAN technology HARMAN express.com

BEST OF BRITISH COMPETITION

CAPTURE THE BEST OF BRITISH. FIND INSPIRATION IN LANDSCAPES, SPORTS, PORTRAITS, LIFESTYLE, OR ANY SUBJECT. FOR YOUR CHANCE TO WIN.

FIRST PRIZE
Epson Stylus Photo R3000 A3+ Printer worth over £550

RUNNERS UP
2 prizes of £50 vouchers to spend on HARMANexpress.com or ILFORDLab.com

EXCLUSIVE TO PAGE MEMBERS

Winning images will be displayed at FOCUS ON IMAGING 2012

All entries must be received by 31st December 2011 and winners will be notified by the 1st January 2012.

Competition info page:

<http://harmanexpress.com/page/91/PAGB-Competition-2011.htm>

PAGB Inter-Fed Projected Digital Image Competition



THE ARTHUR DOWNES TROPHY

RESULTS

The Arthur Downes Trophy, was this year awarded to the Midland Counties Photographic Federation who entered 57 images, of which 39 were accepted for the PAGB Digital Exhibition, - they had a marks total of 631 and a winning average mark of 11.070.

This year's 3 judges, Irene Froy MPAGB Hon PAGB EFIAP, Martin Fry FRPS APAGB and Barbie Lindsay MPAGB EFIAP, were also responsible for choosing the images to be included in this year's PAGB Digital Exhibition,

RESULTS - http://www.pagb-photography-uk.co.uk/pagb_2011/projected_images_2011.htm

IMAGES - http://www.pagb-photography-uk.co.uk/pagb_2011/projected_images_2011_2.htm

This year the Scottish Photographic Federation entered 42 images which achieved a marks total of 421 and an average of 10.024, this gained a 9th position from the 15 participating federations – 16 of these images were accepted for the PAGB Digital Exhibition.

CARLUKE CAMERA CLUB – REPORT

Of the 42 images put forward by the SPF for this year's competition 5 of these were by members of our club, - 2 of these entries were accepted for this years' exhibition.

<u>CLUB MEMBER</u>	<u>TITLE</u>	<u>SCORE</u>	
Tom Bone	High Speed Exit	12	ACCEPTED
Libby Smith	The Bouncers	12	ACCEPTED
Hunter Kennedy	Through Winter Mist	10	
Kevin Ramage	Butterfly	9	
Ed Willis	Singing his Heart Out	9	

ARTHUR DOWNES TROPHY 2012 – TO INCLUDE NEW NATURAL HISTORY SECTION

The Annual Inter-Federation PDI Competition results in an AV show on CD which circulates to Federations and member Clubs. At a recent executive meeting of the SPF it was decided that, in the interest of producing a CD of sufficient length to fill a club evening, a separate Natural History PDI competition will be introduced. This will run alongside the Open event which will now exclude Nature photographs.



PAGB Inter-Club Print Championship 2011

Connah's Quay – Results

This year's Scottish contestant's were Carluke C.C and Dumfries C.C who had pre qualified by being in last year's final round – they were joined by Edinburgh P.S and Dundee P.S., 2 of the top clubs at last year's SPF Club Print Championship.

John Robb Quaich – Winners
Arden P.G. (last year's winner), and,
Edinburgh Photographic Society.

PAGB Gold Medal
Best Colour Print

Gentoo Retreat by Graham Jones
from Stafford P.S. MCPF

PAGB Gold Medal
Best Monochrome Print

Kenny and Jimmy by Sandy Clelland
from Edinburgh P.S. SPF

THE FINALISTS

CLUB	1 ST ROUND SCORE/POSITION	FINAL SCORE	FINAL PLACE
ARDEN P.G.	151/ 4 TH	190	1 ST =
EDINBURGH P.S.	152/ 2 ND =	190	1 ST =
WIGAN 10 F.C.	158/ 1 ST	189	3 RD
CAMBRIDGE C.C.	152/ 2 ND =	186	4 TH
BEYOND GROUP	144/ 8 TH =	185	5 TH
SMETHWICK P.S.	144/ 8 TH =	182	6 TH
AMERSHAM P.S.	147/ 5 TH	179	7 TH =
DUNDEE P.S.	146/ 6 TH	179	7 TH =
CARLUKE C.C.	145/ 7 TH	178	9 TH

The 8 Clubs with the highest aggregate score in Round 1 contest this Final – they also pre qualify for entry to next year's competition.

PAGB Silver Medals - JUDGES CHOICES

Tom Dodd

Colour: Stocking Laid Ready
 Jill Baxter, Tenby C.C WPF

Monochrome: Fit to Burst
Hunter Kennedy, Carluke C.C., SPF

Irene Froy

Colour: Admiration
 John Clark, Conwy C.C., NWPA
 Monochrome: The Net
 John Robertson, Dundee P.S., SPF

Anne Sutcliffe

Colour: Santorini Cat
 Peter Paterson, Edinburgh P.S., SPF
 Monochrome: The Defenders
 Phil Charnock, Wigan 10 F.C., L&CPU

The Terry Chapman Plate

The clubs which don't make it to the final compete for this award. It is presented to the club with the highest aggregate score in this round.

	1 st Round Score	Plate Score
Stafford P.S	1 st = 139	63
Tenby C.C	1 st = 140	63

PAGB SILVER MEDAL WINNER
FIT TO BURST

by Hunter Kennedy

There was also a "backstage" award which was given to White Birch – a colour print by Peter Paterson of Edinburgh P.S.

CARLUKE CAMERA CLUB – NEWSLETTER 4 Nov/Dec 2011

SPF CLUB PRINT CHAMPIONSHIP 2011 (CONNAH'S QUAY) - RESULTS

SPF GOLD MEDAL WINNER

THE BOUNCERS by Libby Smith

BEST MONOCHROME PRINT

HIGHLY COMMENDED:

Dorothy by Libby Smith
The Outsider by Hunter Kennedy

COMMENDED:

Against the Mist by Hunter Kennedy

CARLUKE CAMERA CLUB'S – 76 ENTRIES FROM 30 MEMBERS

	COLOUR	mark
Bob Avery	COLLECTING THE COAL	9
	TRACKSIDE SERENADE	10
	WALKING THE PIGS	12
Tom Bone	MUDDY RACE	11
	ACHRAY MIST	11
	A WET RACE	11
Billy Chapman	BISHOPS BAY	9
	APPROACHING STORM RANNOCH	11
Matt Craig	THE TUNNEL	9
	LOCH LOMOND TWILIGHT	11
Lottie Crawford	MILTON IN WINTER	12
	WINTER STROLL	13
Hunter Kennedy	THE SITTING ROOM	12
	THE OUTSIDER	14
	AGAINST THE MIST	14
Majid Khan	LOVE IN THE AIR	9
	SMILE BEHIND A MASK	10
	HUMBLE HEMISH	12
Alex Miller	FROZEN BIRCHES	12
Alan Mills	CLYDE VIEW	10
	GLASGOW GALLERY	11
David Owen	651	10
	PENNY FOR YOUR THOUGHTS	10
Harry Paterson	WINTER MORNING LOCH LOCHY	11
Martin Pinkus	SEE YOU SEE ME	9
	THE LADY IN RED	12
Kevin Ramage	EAGLE	9
	BUTTERFLY	12
Tom Robley	WOODPECKER	9
	DERWENT WATER	9
	OVER THE BUMPS	10
Janet Russell	STEP N STYLE	10
	FAITH AND HOPE	13
	THE BELIEVERS	14

CLUB AWARDS

JOHN LOGAN TROPHY (BEST OVERALL CLUB)

EDINBURGH PHOTOGRAPHIC SOCIETY

SPF GOLD MEDAL

BEST COLOUR CLUB

EDINBURGH PHOTOGRAPHIC SOCIETY

SPF GOLD MEDAL

BEST MONOCHROME CLUB

DUMFRIES CAMERA CLUB

TOP 5 CLUBS

EDINBURGH P.S.	1 ST	271
CARLUKE C.C.	2ND	= 263
DUMFRIES C.C.	2 ND	= 263
DUNDEE P.S.	4 TH	259
ST ANDREWS P.S.	5 TH	235

PAGB INTER-CLUB PRINT CHAMPIONSHIP (CONNAH'S QUAY) 2012

WITH EDINBURGH PHOTOGRAPHIC SOCIETY, CARLUKE CAMERA CLUB, AND, DUNDEE PHOTOGRAPHIC SOCIETY ALL HAVING PRE QUALIFIED TO TAKE PART IN NEXT YEAR'S COMPETITION - DUMFRIES CAMERA CLUB AND ST ANDREWS PHOTOGRAPHIC SOCIETY WILL NOW JOIN THEM TO MAKE UP A MASSIVE SCOTTISH CONTINGENT OF 5 CLUBS WHO WILL COMPETE AT NEXT YEARS EVENT.

CARLUKE CAMERA CLUB – NEWSLETTER 4 Nov/Dec 2011

Cameron Scott	TUFTED DUCK	9
	SEDGE WARBLER	11
Christine Smith	FIVE TULIPS	10
Libby Smith	THE ARCADE CLOWN	11
	THE BEACH HUT	13
	DOROTHY	14
Neil Smith	OLD FAITHFUL	10
	THE VISITOR	14
Fiona Somerville	CELTIC SPIRAL	8
	POPPIES A LA CARTE POSTALE	10
	WEIRD SISTERS	11
Steve Van Der Walt	ROGUE TRADERS	9
	MINING TRUCKS	9
	WINNING INTENT	11
Alison Willis	HERRING GULL AND CHICK	9
Ed Willis	EYE OF FROG	10
	PUFFIN	10
	LUKE	11

	MONOCHROME	mark
Bob Avery	MORNING STEAM	11
	TAKING A BREAK	12
Richard Gray	WATCHMAN	10
Hunter Kennedy	DEPTHS OF WINTER	12
	DAMIEN AND CO	13
	THE DOG WALKERS	13
Majid Khan	YOUNG STAG GRAZING	10
	CHARLIE	12
Ian McCallum	CROATIAN STREET SCENE	10
David Owen	FREAKY FOREST	9
	BADCALL BAY	9
Harry Paterson	LUCKY FOR SOME	10
Martin Pinkus	MEN AT WORK	9
Susan Pinkus	ONE CAREFUL OWNER	9
Jim Pollock	THE MISFITS	13
Janet Russell	GONDALAS	12
	WINTERS BLOOM	13
John Seenan	THERE'S GOLD IN THEM HILLS	9
Libby Smith	HAPPY TO GOSSIP	13
	THE SISTERS	13
	THE BOUNCERS	15
Neil Smith	THE IRONMONGER	13
Jack Watson	ORKNEY STONES	10
Bert Weir	MUSCLE MAN	10

ONLY THE TOP 10 MARKS ARE INCLUDED FOR THE FINAL SCORE
 CARLUKE SCORED 133 IN THE COLOUR, AND 130 IN THE
 MONOCHROME, - GIVING THEM 2ND PLACE IN BOTH.

INDIVIDUAL AWARDS

ESME SMYTHE TROPHY

(best print)

MISTY TREELINE

By Peter Paterson

Edinburgh Photographic Society

SPF GOLD MEDALS

BEST COLOR PRINT

MISTY TREELINE

by Peter Paterson

Edinburgh Photographic Society

BEST MONOCHROME PRINT

THE BOUNCERS

by Libby Smith

Carluk Camera Club

CAMPBELL McNAIR TROPHY

(BEST LANDSCAPE PRINT)

WINTER BIRCH

by Peter Paterson

Edinburgh Photographic Society

SPF BRONZE MEDALS

(JUDGES CHOICES)

JANE BLACK

DANCERS

by Sandy Clelland

Edinburgh Photographic Society

IRENE FROY

THE THREE BEARS

by Stewart Niven

Kinross Camera Club

CHRISTINE WIDDALL

RAINY DAY

by Rikki O'Neil

Dundee Photographic Society

CARLUKE CAMERA CLUB – NEWSLETTER 4 Nov/Dec 2011

GLASGOW DISTRICT PHOTOGRAPHIC UNION – (GDPU)

PRINT EXHIBITION 2012 - FREE ENTRY FOR BEGINNERS

The GDPU Print Exhibition

This is an “open” competition i.e. there is no theme.

Both Colour and Monochrome prints are accepted.

Along with the entries to the Club section of the Club Print Exhibition, and the top entries to the Beginners Print section – “accepted” prints from the Individual Print Salon, are also displayed in this exhibition.

As well as competing for a winning place – awards are also presented for Best Colour print, Best Monochrome print and, Judges’ Personal Choices (1 from each of 3 judges) .

CLUB PRINT SECTION

CARLUKE’S CLUB ENTRY 2011/12

THE IRONMONGER by Neil Smith

SINGING HIS HEART OUT by Ed Willis

THE HORSE WHISPERER by Libby Smith

FIT TO BURST by Hunter Kennedy

THE INDIVIDUAL PRINT SALON

ENTRY FEE £1

For individual members of affiliated clubs. Authors can enter their own selection of prints which will be judged by a panel of judges in a salon manner - where each print is displayed for a short time in front of the judges and each judge allocates a score between 2–5. A total score of 11 or more gains “Acceptance” and these prints are exhibited at the GDPU Print Exhibition.

GDPU PRINT EXHIBITION 2010

Unfortunately , with very short notice in January 2010, the availability of the usual venue in Princes Mall, Glasgow was withdrawn – the judging however went ahead, and, in the absence of a suitable venue a digital version of the top prints have been hosted on the GDPU website :

http://www.gdpu-uk.org/Galleries/2010_Print_Exhib/new_gallery/index.html

GDPU COMPETITIONS PAGE

<http://www.gdpu-uk.org/competitions.htm>

CLUB PRINT EXHIBITION This annual competition allows each affiliated club the opportunity to enter four prints that will be judged against the other club entries. All club entries will be displayed at the GDPU Exhibition.

BEGINNERS' PRINT EXHIBITION exclusively for beginners - All entries are judged against each other and the top entries are then shown in a public exhibition. No entry fee is required.

THE INDIVIDUAL PRINT SALON This competition is held each year and is for individual members of affiliated clubs. Authors can enter their own selection of prints which will be judged by a panel of judges.

THE RULES ARE AVAILABLE ON THE GDPU WEBSITE AT THE LINK BELOW

<http://www.gdpu-uk.org/Text/PrintExhibitionRules2008.pdf>

HOW TO ENTER

Beginners and Individual Salon Prints can be entered via our external competition secretary Hunter Kennedy by Friday 13th January 2012 - along with the appropriate fee.

ENTRY FORM

<http://www.gdpu-uk.org/Text/EntryFormC2008.pdf>

SEE ALSO THE GDPU CORE COMPETITION RULES ON THE NEXT PAGE for FURTHER INFORMATION ON RULES AND CONDITIONS OF ENTRY

CARLUKE CAMERA CLUB – NEWSLETTER 4 Nov/Dec 2011

GDPU PRINT EXHIBITION 2012 - FREE ENTRY FOR BEGINNERS

THE INFORMATION BELOW HAS BEEN SELECTED FROM THE GDPU WEBSITE

GDPU Core Competition Rules 2008 - <http://www.gdpu-uk.org/Text/CoreRules2008.pdf>

Excerpt from Core Rules that apply to all GDPU competitions

3.2 All print images must be mounted on card mounts. Acceptable mount dimensions are either 500mm x 400mm or 400mm x 300mm irrespective of print size.

3.5 Each entry must be complete with the appropriate entry form and fee if applicable

3.10 Entry fees should be by cheque, made payable to Glasgow District Photographic Union.

3.18 Each print entry must have the following information attached:-

Title Authors Name Club name

All information should be legible and unambiguous and placed on the back of each print.

2. Competition Overview

To aid clubs and new club members understand the various GDPU competitions, the following overview of each is given:-

2.1 Club Print Exhibition: The exhibition is judged during January /February and displayed at a public venue - which until its last showing in 2009, had been held annually at Princes Square Shopping Mall in Glasgow. Exhibition dates will be to suit venue availability, but is usually during February/ March each year. The intent of this competition is to display the standard and competence of each individual club and to promote each club to the general public. This competition is divided into;

Club Print section where each club can submit one entry of four images.

Beginners Section which is open to any person considered as a beginner as defined in that clubs own rules. Entry is free and each beginner can enter up to four images.

2.3 Print Salon: Fees £1 per individual image This is an “open” print competition where any individual who is a member of an affiliated club can enter. The standard of entry should be of national / international level to promote amateur photography to the general public. Acceptances are selected by a panel of judges in a salon manner and the successful images are displayed during the same period as the Club Exhibition entries.

CARLUKE CAMERA CLUB – NEWSLETTER 4 Nov/Dec 2011

Glasgow District Photographic Union (GDPU)

THE JOHN DUFFY PRINT PORTFOLIO

This is an annual opportunity for GDPU affiliated clubs to submit the work of 4 of their members' that are judged as individual entries. From those entered the top 50 prints are collated and viewed as a travelling portfolio.

This year's portfolio was judged on Wed 2nd November by Dr Neil Scott ARPS at Eastwood Camera Club. This year's travelling portfolio will contain all 4 entries from Carluke, see list below, and will be available for viewing on Friday 10th February 2012.

Storm Lighting, - Billy Chapman (Colour)
Wish you were Here, - Martin Pinkus (Colour)
Hanging On, - Bert Weir (Colour)
Blackhouse Lewis, - Majid Khan (Mono)



BLACKHOUSE LEWIS

by, Majid Khan

ANNUAL INTER CLUB PRINT BATTLE AT KESWICK CARLUKE WINS AGAIN

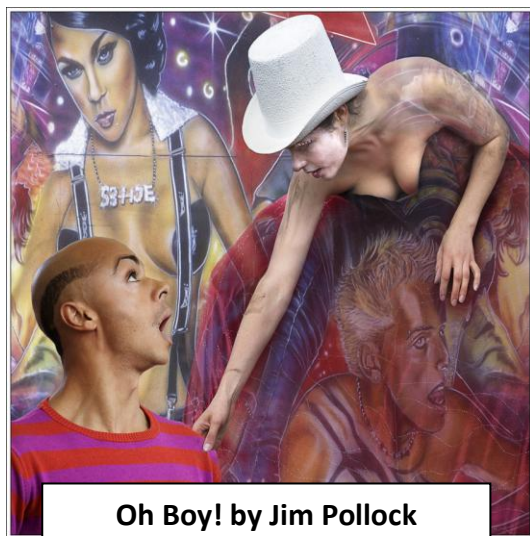
This competition is hosted annually by Keswick Photographic Society and took place this year at Portinscale Village Hall, Keswick. 8 Clubs from North, South, East and West of Britain participated in this event, with each club entering 10 prints. Last year Carluke were 1st and Ayr was 2nd.

The judge this year was John McVie from Dumfries. This year's results, were:

1st Carluke CC - 272, 2nd Ayr CC - 257, 3rd Hartlepool - 243, 4th North Cheshire - 241, 5th Keswick - 233, 6th South Manchester - 230, 7th Tyneside Digital I.G. - 215, and, 8th West Cumbria – 207.

Below is a list of our 10 entries compiled from 7 of our club members, and how they scored.

Libby Smith	The Horse Whisperer	30
	Girls with Attitude	29
Hunter Kennedy	Through Winter Mist	30
	Fit to Burst	25
Tom bone	Biking in the Rain	29
	High Speed Exit	26
David Owen	Through the Air	27
Jim Pollock	Oh Boy!	26
Neil Smith	The Ironmonger	26
Bob Avery	Collecting the Post	24



Oh Boy! by Jim Pollock

CARLUKE CAMERA CLUB – NEWSLETTER 4 Nov/Dec 2011

ANNUAL INTERNATIONAL DIGITAL BATTLE RESULTS

Sunday 30th October 2011 - hosted by Eryri photo group
Electric Mountain, LLanberis. Judged by Peter Yeo

An annual battle between Carluke (Scotland), Drogheda (Ireland), Oxford (England) and Eryri (Wales). Carluke won this last year when it was hosted by Oxford. This year Carluke and Eryri drew for 1st place. Each club puts forward 20 images, and this year Carluke was represented by Ed Willis, Jim Pollock, Bob Avery, Tom Robley, Kevin Ramage, Janet Russell, Steve Van der Walt, Libby Smith, Tom Bone, Hunter Kennedy and Libby Smith. Best Overall Image was awarded to "Against the Mist" by Hunter Kennedy – see how each image scored in the table below.

<u>TITLE</u>	<u>AUTHOR</u>	
Sandpiper	Ed Willis	17
Downpour	Jim Pollock	16
Morning Light	Bob Avery	16
Owl in Flight	Tom Robley	19
Butterfly	Kevin Ramage	18
3 Points of View	Janet Russell	18
Green Heron	Ed Willis	18
Boat Wrecks	Steve Van der Walt	16
Holding On	Tom Robley	18
Alone	Libby Smith	18
Singing his heart out	Ed Willis	17
Biking in the Rain	Tom Bone	17
If Only!	Hunter Kennedy	18
High Speed Exit	Tom Bone	17
Go On!	Hunter Kennedy	18
Against the Mist	Hunter Kennedy	20
Girls with Attitude	Libby Smith	18
The Ironmonger	Neil Smith	16
Aunt Ina's Day Out	Hunter Kennedy	18
The Horse Whisperer	Libby Smith	<u>18</u>
	TOTALS;	<u>351</u>



BUTTERFLY by, Kevin Ramage

CARLUKE CAMERA CLUB – NEWSLETTER 4 Nov/Dec 2011

WINTER BIRDS

Last year - Dr Paul Walton RSPB Scotland Head of Habitats and Species said: - "As Scotland faces days of icy, freezing conditions, insects become harder to find and seeds and berries can be locked away by snow and frost. Freezing weather is a potential death sentence for many birds".



Photo by Ed Willis

Robin – The obvious winter time UK number one, the festive Christmas robin. Robins can be found in Woods, hedgerows, parks and gardens.

Size 14 cm

<http://www.rspb.org.uk/wildlife/birdguide/name/r/robin/index.aspx>

"By feeding the birds in your garden, you're helping them survive the worst of the weather. Just a little water, food and shelter can turn your garden into a vital haven for birds in the freezing winter months."



Goldfinch – Often breeds near man in parks, gardens, nurseries, orchards and churchyards. Increasingly they are visiting bird tables and feeders.

Size 12 cm

<http://www.rspb.org.uk/wildlife/birdguide/name/g/goldfinch/index.aspx>

RSPB Scotland is asking people to follow a simple six-point 'wild bird winter survival plan' that will help wildlife during the harshest weather:



Starling – Noisy and gregarious, starlings spend a lot of the year in flocks. Still one of the commonest of garden birds. Large numbers arrive in autumn to spend the winter here.

Size 21.5 cm

<http://www.rspb.org.uk/wildlife/birdguide/name/s/starling/index.aspx>

CARLUKE CAMERA CLUB – NEWSLETTER 4 Nov/Dec 2011



Greenfinch – Parks and gardens with evergreen shrubs and a ready supply of bird table food make them common in towns and villages.

Size 15 cm

<http://www.rspb.org.uk/wildlife/birdguide/name/g/greenfinch/index.aspx>

1. Put out feed regularly, especially in severe weather. Set up a bird table and use high calorie seed mixes. A good alternative would be kitchen scraps such as hard animal fats (suet), grated cheese and porridge oats



Chaffinch –

Anywhere with trees or bushes from city centre parks to remote woodlands. Common garden birds.

Size 14 - 16 cm

<http://www.rspb.org.uk/wildlife/birdguide/name/c/chaffinch/index.aspx>

2. Put out hanging feeders containing black sunflower seeds, sunflower hearts, sunflower-rich mixes or unsalted peanuts.



House Sparrow – Breeds mainly in roofs and holes in buildings, often in colonies. Will also take over nests of House Martins and Sand Martins, sometimes evicting the rightful owners. Equally at home in city centres and farmland, never far from man. Size 14.5 cm

<http://www.rspb.org.uk/wildlife/birdguide/name/h/housesparrow/index.aspx>

CARLUKE CAMERA CLUB – NEWSLETTER 4 Nov/Dec 2011



Brambling – In winter likes beech woodland and farmland fields near woods. Look in flocks of chaffinches and other finches. Will visit gardens in winter.

<http://www.rspb.org.uk/wildlife/birdguide/name/b/brambling/index.aspx>

3. Ensure a supply of fresh water every day. If it is very cold use tepid water but DO NOT use any antifreeze products.



Great Tit – It is a woodland bird which has adapted to man-made habitats to become a familiar garden visitor. It can be quite aggressive at a bird table, fighting off smaller tits. In winter it joins with blue tits and others to form roaming flocks which scour gardens and countryside for food.

<http://www.rspb.org.uk/wildlife/birdguide/name/g/greattit/index.aspx>

4. Put out fruit, such as apples and pears, for blackbirds, song thrushes and other members of the thrush family.



Blue Tit – The Blue tit can be found in deciduous and mixed woodland, gardens, parks and hedgerows. Nests in holes in trees and buildings and readily uses nest boxes. Frequent visitor to bird tables, especially where peanuts are provided.

<http://www.rspb.org.uk/wildlife/birdguide/name/b/bluetit/index.aspx>

CARLUKE CAMERA CLUB – NEWSLETTER 4 Nov/Dec 2011



Blackbird – A very wide variety of habitats - almost everywhere except barren uplands. Familiar in gardens and city parks. The bright orange-yellow beak and eye-ring make adult male blackbirds one of the most striking garden birds. Size 24 – 25 cm

<http://www.rspb.org.uk/wildlife/birdguide/name/b/blackbird/index.aspx>

5. Food bars or fat hung up or rubbed into the bark of trees is a great help for treecreepers, goldcrests and many other species.



Photo by
Cameron
Scott

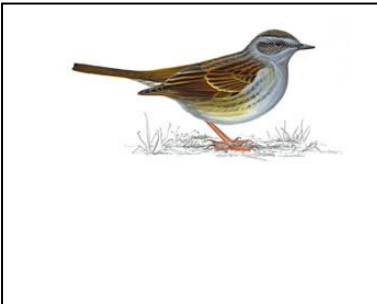
Siskin -

Breeds in conifers. In winter found in birches and alders, banks of streams and will visit gardens for peanuts.

Size 12 cm

<http://www.rspb.org.uk/wildlife/birdguide/name/s/siskin/index.aspx>

6. Put up nest boxes to provide shelter for the smaller birds. They may well be used for breeding later in the year.



Dunnock – Inhabits any well vegetated areas with scrub, brambles and hedges. Look in deciduous woodland, farmland edges, parks and gardens. Keeps largely on the ground and often close to cover.

<http://www.rspb.org.uk/wildlife/birdguide/name/d/dunnock/index.aspx>

NATURE PHOTOS WANTED FOR NEXT NEWSLETTER

email: sadieandian@hotmail.com